

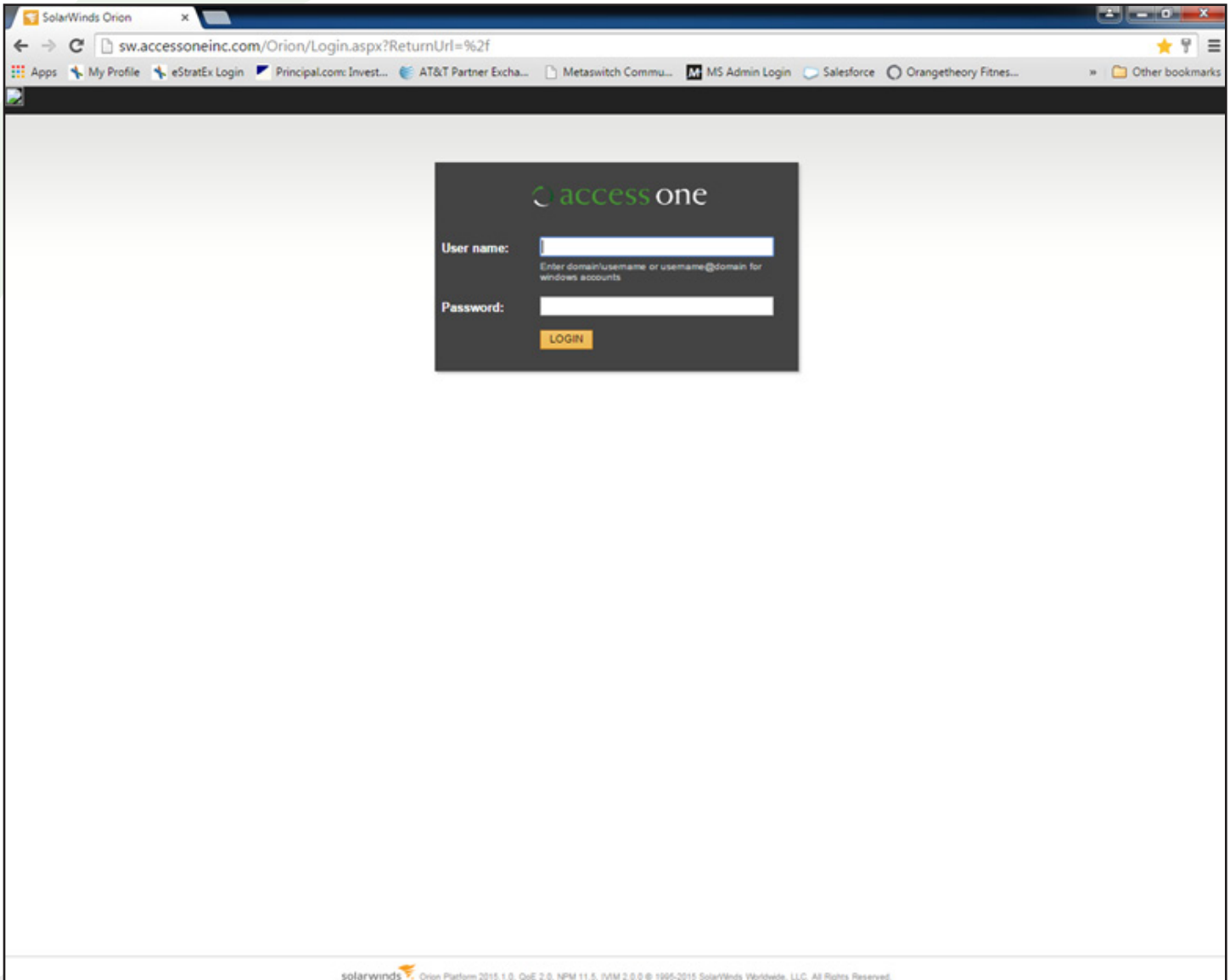
Data Trax Web Portal Powered by SolarWinds Orion

Contents


Logging into Access One Data Trax powered by SolarWinds Orion.....	2
Navigating Data Trax.....	3
All Groups.....	3
Groups with Problems.....	3
Active Group Alerts.....	3
Last 25 Group Events.....	3
Viewing Node Details.....	4
Node Summary.....	4
Node Vital Stats.....	5-7

Logging into Access One Data Trax powered by SolarWinds Orion

Using any web browser, navigate to <http://sw.accessoneinc.com>. Use the credentials provided to you by Access One personnel to successfully log into the platform.



Navigating Data Trax

Once you've logged in, you will be brought to the default summary view. To see the details of your equipment, expand the  icon next to your group, and click the corresponding equipment you would like to view.

All Groups

Navigate your company's associated devices from this panel.

Groups with Problems

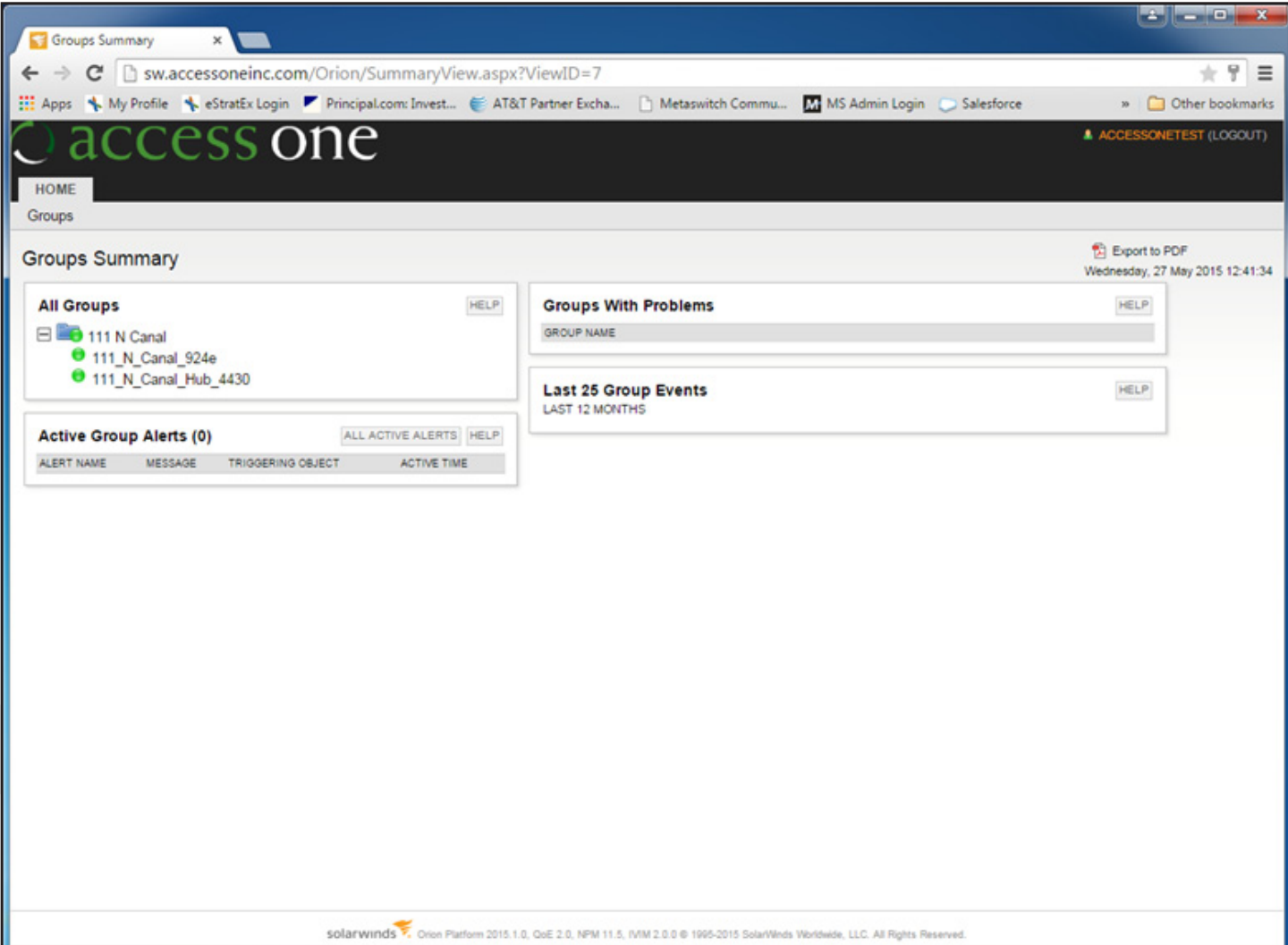
This displays any group with problems associated to your company.

Active Group Alerts

This panel will display alerts such as a down interface, router, or any other network alert data.

Last 25 Group Events

This is a running log of the events that have occurred recently associated to your devices and locations.



The screenshot shows the Orion Summary View in a web browser. The browser address bar shows `sw.accessoneinc.com/Orion/SummaryView.aspx?ViewID=7`. The page header includes the Access One logo and a user profile for 'ACCESSONETEST (LOGOUT)'. The main content area is titled 'Groups Summary' and includes an 'Export to PDF' button and the date 'Wednesday, 27 May 2015 12:41:34'. There are four main panels: 'All Groups' with a tree view showing '111 N Canal' and its sub-items; 'Groups With Problems' with a search bar for 'GROUP NAME'; 'Active Group Alerts (0)' with a table header for 'ALERT NAME', 'MESSAGE', 'TRIGGERING OBJECT', and 'ACTIVE TIME'; and 'Last 25 Group Events' with a 'LAST 12 MONTHS' filter. The footer contains the SolarWinds logo and version information: 'Orion Platform 2015.1.0, QoE 2.0, NPM 11.5, IVM 2.0.0 © 1995-2015 SolarWinds Worldwide, LLC. All Rights Reserved.'

Viewing Node Details

Once you've clicked on a device from the home page, you can view the details of that device (which is referred to as a node).

Node Summary Page

The node summary page will give you quick information regarding the node you are viewing, such as IP address, Availability Statistics, Active Alerts on the Node and Current Utilization.

The screenshot displays the 'Node Details - Summary' page for node '111_N_Canal_924e'. The page is divided into several sections:

- Management:** Includes a 'HELP' button.
- Node Details:** Shows 'Node Status' as 'Node is Up'. Other details include Polling IP Address (96.47.137.102), Dynamic IP (No), Machine Type (Adtran), DNS, System Name (111_N_Canal_924e), Description (Total Access 924e (2nd Gen), Version: A4.11.00.E, Date: Mon Jan 23 17:06:35 2012), Location, Contact, SysObjectID (1.3.6.1.4.1.664.1.996), Last Boot (Wednesday, February 11, 2015 11:13 AM), Operating System (A4.11.00.E, Date: Mon Jan 23 17:06:35 2012), IOS Image (2nd Gen), Hardware (Physical), No of CPUs (0), Telnet (telnet://96.47.137.102), and Web Browse (http://96.47.137.102).
- Polling Details:** Shows Polling IP Address (96.47.137.102), Polling Engine (GOOSE (192.168.168.6)), Polling Method (SNMP), Polling Interval (240 seconds), Next Poll (12:45 PM), Statistics Collection (10 minutes), Enable 64 bit Counters (Yes), Rediscovery Interval (30 minutes), Next Rediscovery (12:46 PM), and Last Database Update (Wednesday, May 27, 2015 12:41 PM).
- Active Alerts on This Node (0):** Shows 'ALL UNACKNOWLEDGED ALERTS' with columns for ALERT NAME, MESSAGE, TRIGGERING OBJECT, and ACTIVE TIME.
- Availability Statistics:** A table showing availability percentages for various periods: Today (100.000%), Yesterday (100.000%), Last 7 Days (100.000%), Last 30 Days (100.000%), This Month (100.000%), Last Month (99.180%), and This Year (99.802%).
- Event Summary:** Shows 'LAST 24 HOURS' with 2 'Interface Changed' and 1 'Node Changed' events.
- Current Percent Utilization of Each Interface:** A table with columns for STATUS, INTERFACE, and utilization. A tooltip is shown over the 'eth 0/1' interface, displaying:
 - Interface: eth 0/1: MAC: MPC8260 FCC1 PHY: BCM5241 v3.1 - connection to 4430
 - Oper. Status: Up
 - Admin. Status: Up
 - Interface Type: Ethernet
 - Transmit: Current Traffic: 727.563 kbps, Percent utilization: 1%
 - Receive: Current Traffic: 8.752 Mbps, Percent utilization: 9%
- Last 5 Notes (0):** A section for notes, currently empty.

Hovering over an interface will give you live details on that interface, such as utilization and bandwidth.

This close-up view shows the 'Current Percent Utilization of Each Interface' section. The table lists the following interfaces:

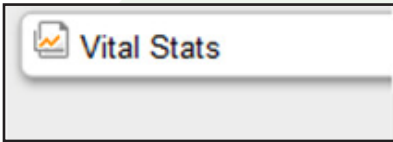
- Up eth 0/1: MAC: MPC8260 FCC1 PHY: BCM5241 v3.1 - connection to 4430
- Up eth 0/2: MAC: MPC8260 FCC3 PHY: BCM5241 v3.1 - eth 0/2

The tooltip for the first interface provides the following details:

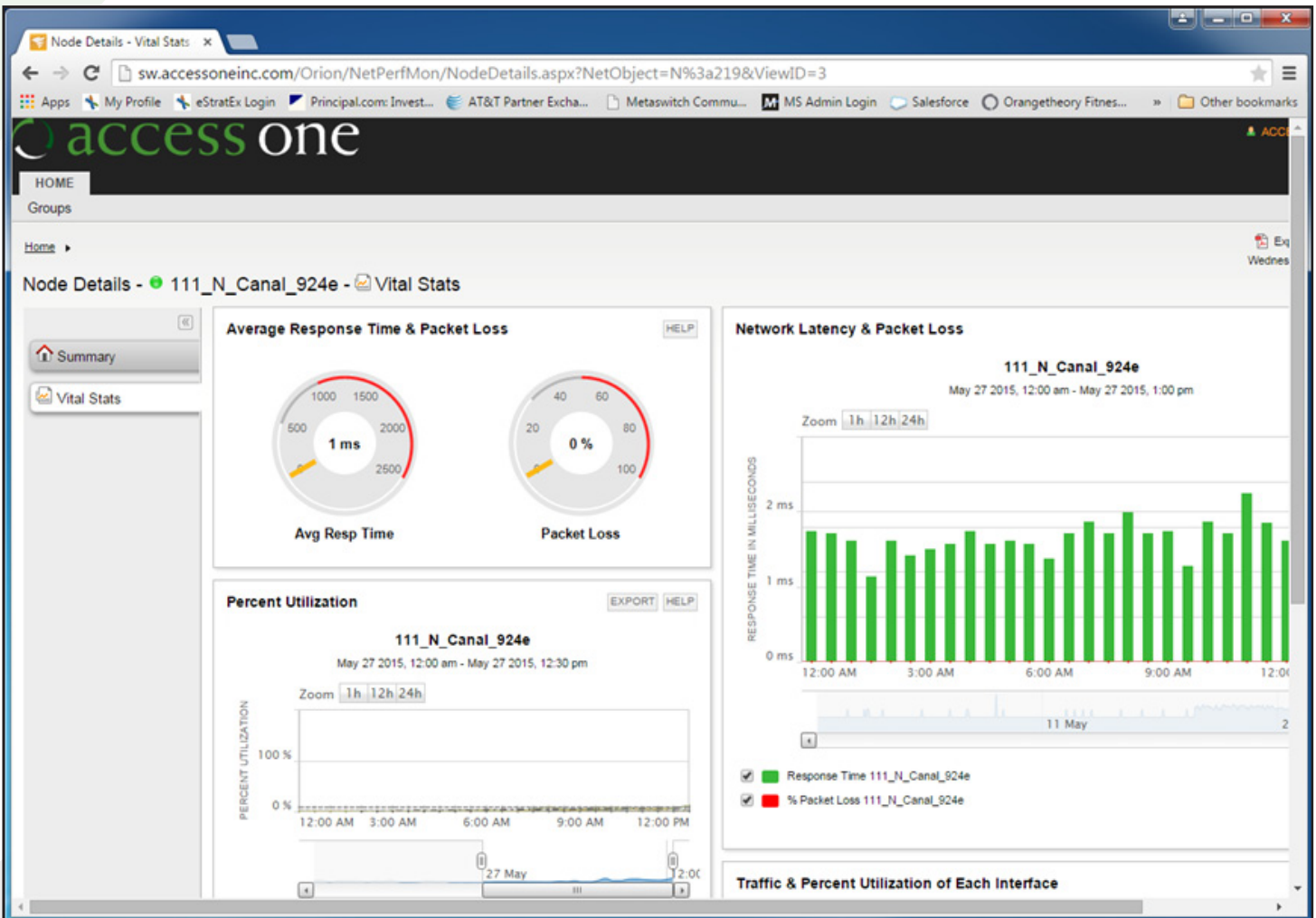
- Interface:** eth 0/1: MAC: MPC8260 FCC1 PHY: BCM5241 v3.1 - connection to 4430
- Oper. Status:** Up
- Admin. Status:** Up
- Interface Type:** Ethernet
- Transmit:** Current Traffic: 177.174 kbps, Percent utilization: 0%
- Receive:** Current Traffic: 3.752 Mbps, Percent utilization: 4%

Node Vital Stats Page

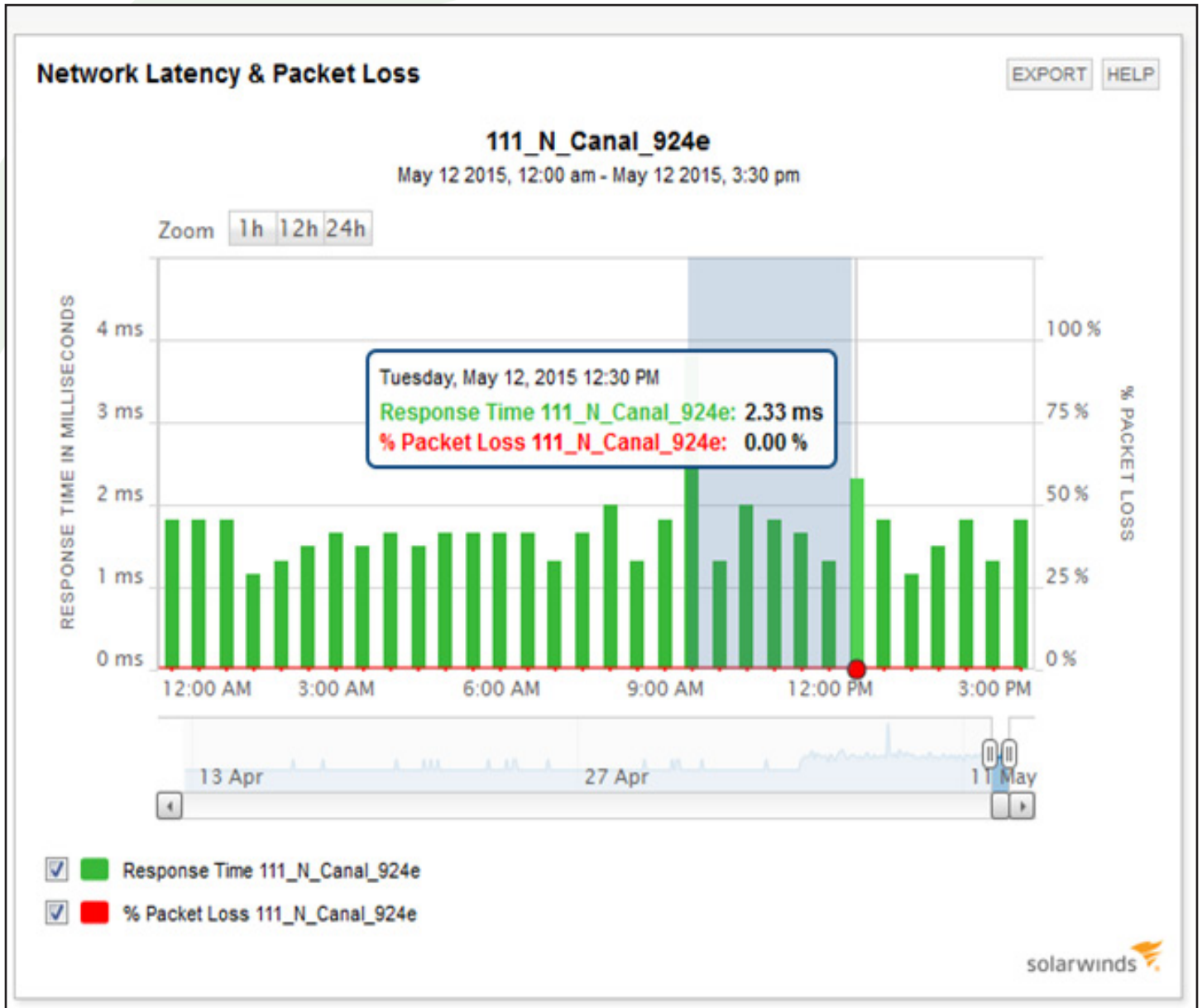
On the Node Summary page, click the Vital Stats tab on the left menu bar.



The Vital Stats page is designed to give you graphs, charts and statistics on your devices. The data is refreshed every 5 minutes.



You can hover over any of the graphs for more detailed statistics. Click and hold your left mouse button and drag across times to zoom into further detail for the selected time period.



Previously, the times 9AM to 12PM were highlighted and the resulting graph has now zoomed into the selected times.

